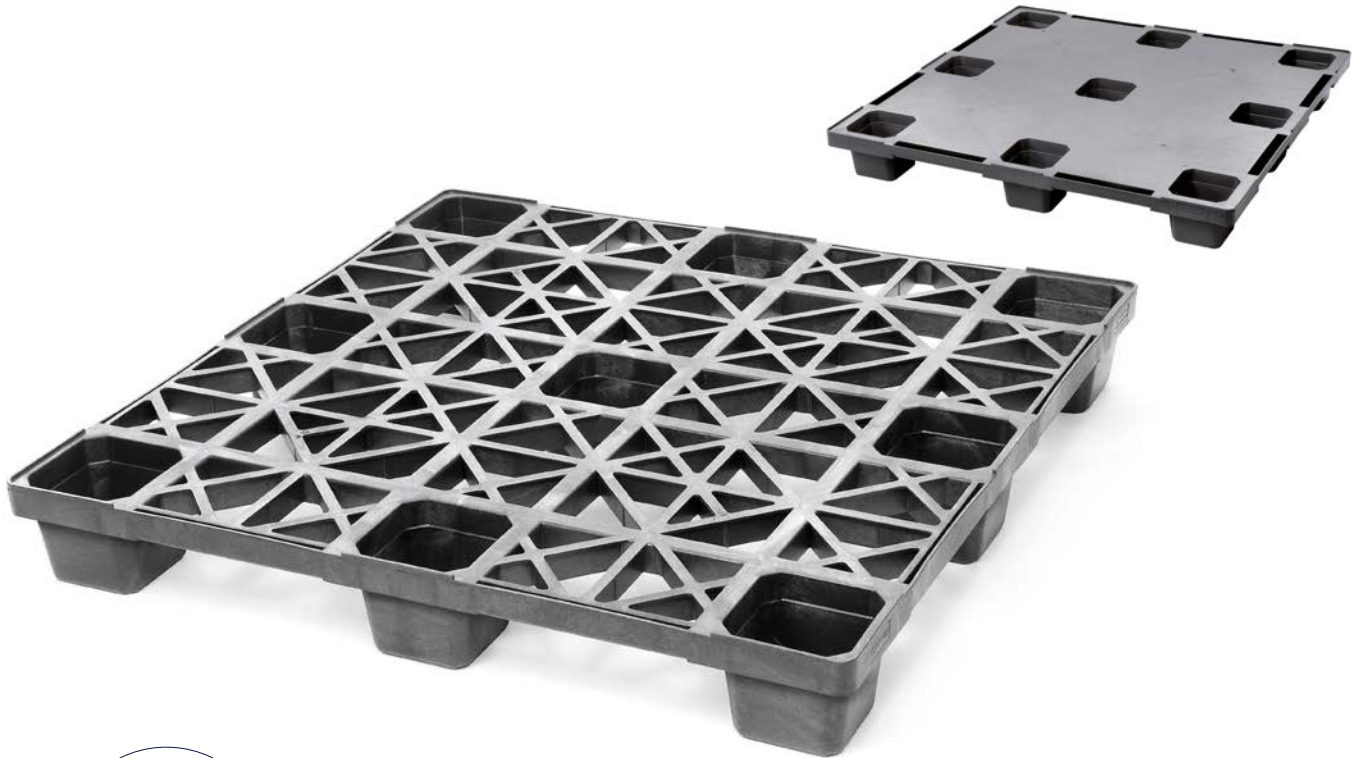


# Nest C5 | Nest C5.2 | 1100 x 1100 | 1140 x 1140



### Nestable container plastic pallet

These container-size pallets leave no empty storage space. Optimized for transport in ISO freight containers, the pallet uses the available load space. There is a choice of two dimensions. All sizes come with an open or closed upper deck. Besides the nestable version (9 feet), the pallet is also available with 6 runners (cruciform perimeter base) and can therefore be used for block stacking.

#### Bottom support



> 9 feet (9F)



> 3 runners (3R)



> 6 runners (6R)



Optional without safety rim

#### Deck options



> open deck (OD)



> closed deck (CD)



Rounded edges

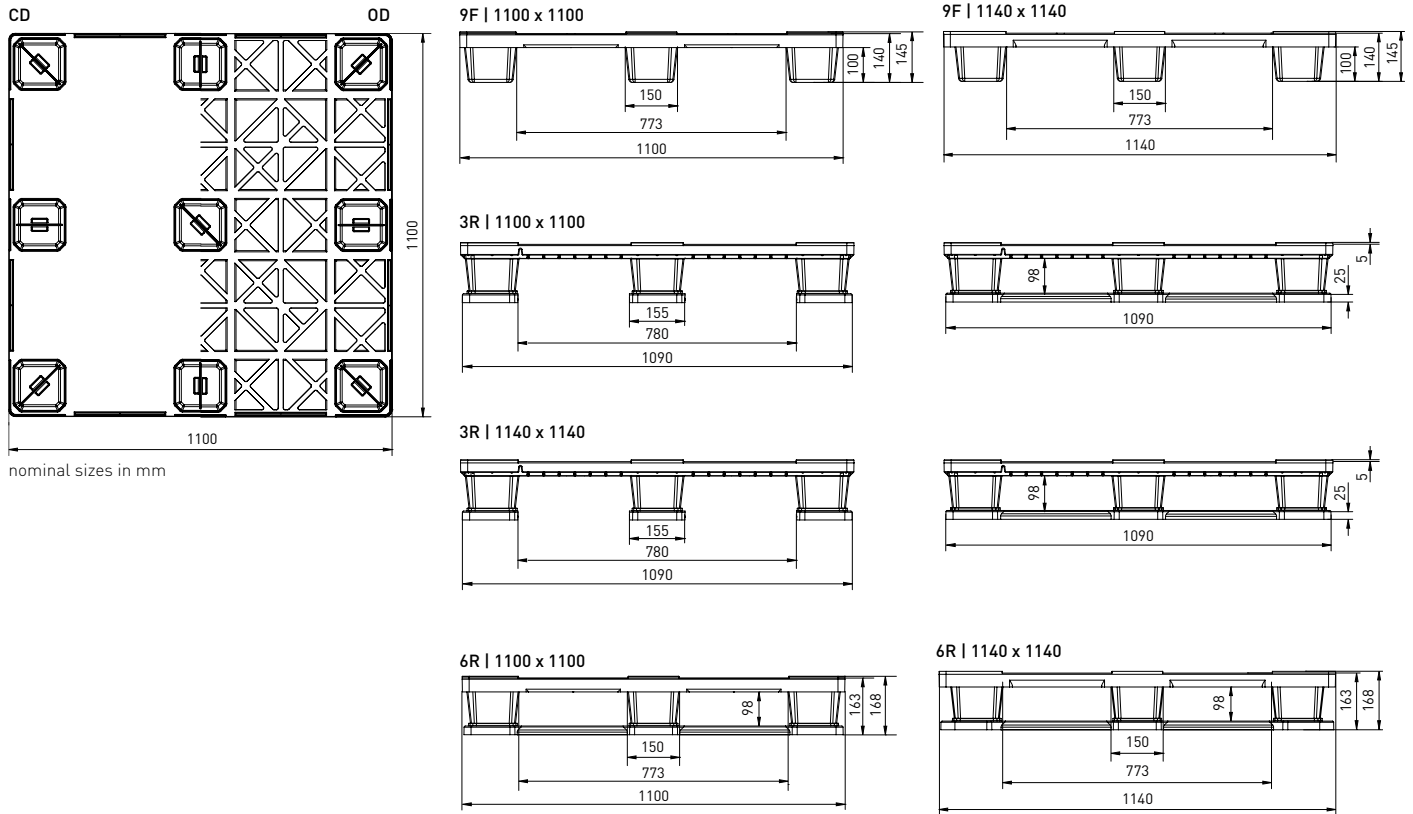


Easy handling

## Technical data\*1

	Bottom support	Top deck	Dimensions [mm]	Load capacities*2 [kg]			Weight [kg]		Pallets per	
				Static	Dynamic	Racking	HDPE	PO	Stack	Truck
Nest C5 (OD-9F)	9 feet, nestable	open	1100 x 1100 x 140	4000	1500	-	10,0	11,5	39	936
Nest C5 (CD-9F)		closed					11,5	12,5		
Nest C5 (OD-3R)	3 runners	open	1100 x 1100 x 163	6000	1850	300	13,5	14,5	14	336
Nest C5 (CD-3R)		closed					15,0	16,5		
Nest C5 (OD-6R)	6 runners	open	1100 x 1100 x 163	8000	2400	300	14,0	16,0	14	336
Nest C5 (CD-6R)		closed					15,0	17,0		
Nest C5.2 (OD-9F)	9 feet, nestable	open	1140 x 1140 x 140	4000	1500	-	10,5	11,5	39	858
Nest C5.2 (CD-9F)		closed					12,0	13,5		
Nest C5.2 (OD-3R)	3 runners	open	1140 x 1140 x 163	6000	1850	300	14,0	15,0	14	308
Nest C5.2 (CD-3R)		closed					15,5	17,0		
Nest C5.2 (OD-6R)	6 runners	open	1140 x 1140 x 163	8000	2400	300	15,5	17,0	14	308
Nest C5.2 (CD-6R)		closed					17,0	18,5		

Entry: 4 ways | Nesting height: 60 mm | Safety rim: 5 mm (optional without)



## Options

- Color:  (other colors on request\*3) > Individual marking\*3
- Anti-slip:  safety rim
- ESD prevention:  -

\*1 Figures can vary depending on the raw material used and options applied. \*2 Guideline values are based both on experience and parts of test ISO 8611, which tests with evenly distributed loads at room temperature (20°C). Varying data may result from different conditions of usage. Your specific requirements can be identified upon request. \*3 Minimum quantity required - PO pallets should only be used and stored in a dry environment. We reserve the right to change any of the stated information without prior notice.