

# T°bag

---

**Multi-use packaging  
for Chilled and Frozen  
goods «Last mile» delivery**

Name	Dimensions, cm
	W x H x Bottom
T°bag1	32x30x10
T°bag2	40x35x12
T°bag3	55x40x15

**We can manufacture any type Temperature Bag ( T°Bag ) upon customer specifications and sizes respectfully.**



# T°bag

---

## T°bag ADVANTAGES



- Perfect insulation
- Lightweight
- Inexpensive
- Great space and volume saver
- Eco friendly (100% recyclable)
- Easy to clean

# T°bag

## Eutectic plates (cold accumulators) For T°bags



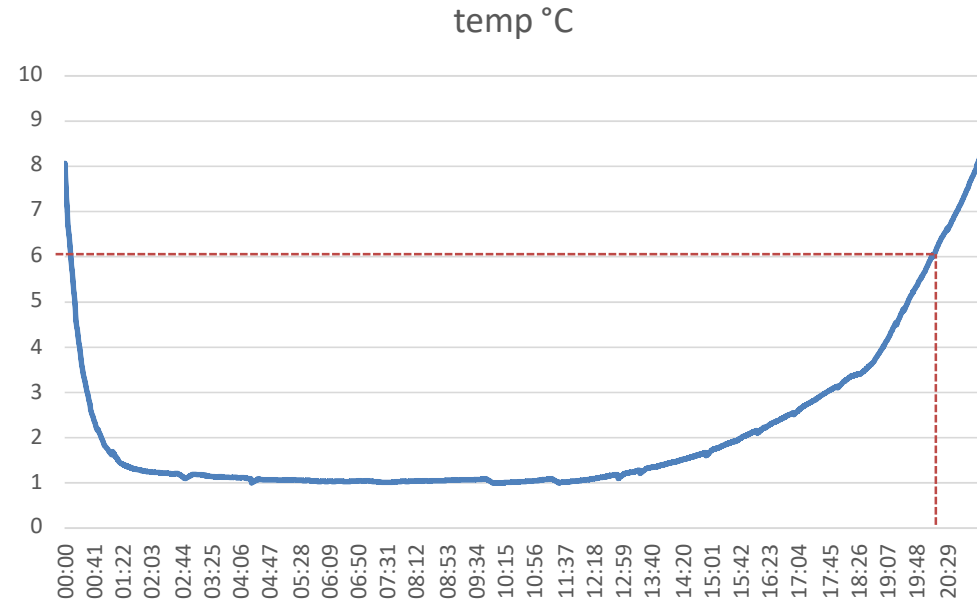
MODEL	DIMENSIONS	WEIGHT	MATERIAL
CARTRIDGE 500 CC	220 x 148 x 20 mm	0,6Kg (± 8%)	Food-graded polyethylene
CARTRIDGE 250 CC	195 x 90 x 20 mm	0,3 Kg (± 8%)	Food-graded polyethylene

# T°bag for Chilled food delivery



**T°bag2 + 2 CARTRIDGE 500 CC 0°C**

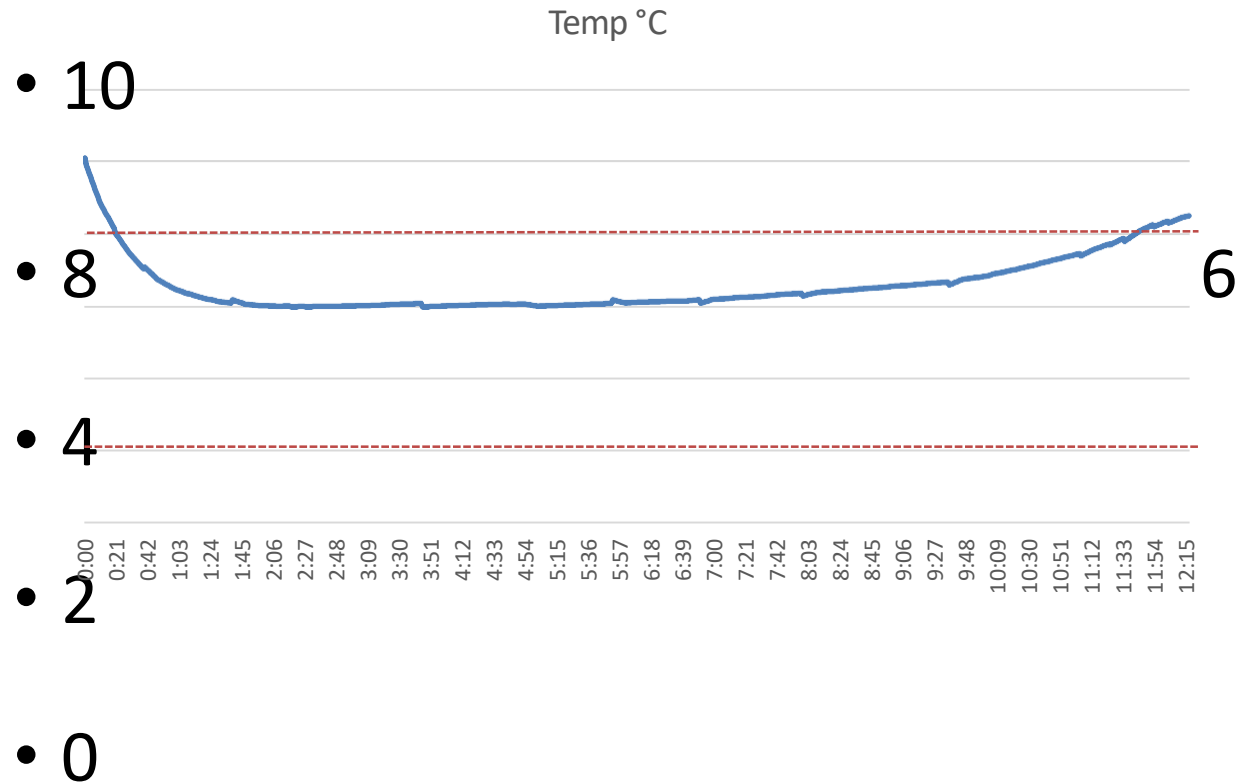
**Temperature < 6°C during ~ 20 Hours**



# T°bag for Pharma at +2°C...+8°C

T°bag1 + 1 CARTRIDGE 500 CC 0°C

- 12  
Temperature +2...+8°C during ~ 12 Hours



# T°bag for Frozen food delivery

---

T°bag



**MODEL**  
**T°bag2**  
**T°bag2**



Dry Ice  
Small quantity



**Dry Ice**  
200gr  
500gr

**-18°C during**  
5 Hours  
10 Hours